

OTTOMANS & BENCHES

Personalize your ottoman or bench with a variety of options, including hundreds of fabric and finish choices. Making it yours is simple! Choose your size and a fabric or leather. Choose your base and molding. Choose your top style and nail trim. Choose your base finish. Personalize your ottoman or bench — make it yours.

MAKE IT YOURS OTTOMANS

- 1 Choose your fabric or leather.
- 2 Choose your ottoman shape and size.



SQUARE (S)

36S W 36 D 36 H 18.5
40S W 40 D 40 H 18.5
44S W 44 D 44 H 18.5
48S W 48 D 48 H 18.5
52S W 52 D 52 H 18.5
56S W 56 D 56 H 18.5
60S W 60 D 60 H 18.5



RECTANGULAR (R)

52R W 52 D 40 H 18.5
56R W 56 D 40 H 18.5
60R W 60 D 40 H 18.5



THIN RECTANGULAR (T)

48T W 48 D 36 H 18.5
52T W 52 D 36 H 18.5
56T W 56 D 36 H 18.5
60T W 60 D 36 H 18.5



ROUND (D)

36D Diameter 36 H 18.5
40D Diameter 40 H 18.5
44D Diameter 44 H 18.5
48D Diameter 48 H 18.5

- 3 Choose your base (leg or skirt) and a wood finish *(if applicable)*.

**Optional casters are available on skirt and base to the floor versions.*



Plain Tapered Leg
(1)



Turned Leg
(2)



12" Dressmaker Skirt* (3)
(fabric only)



Base to the Floor* (6)



Acrylic Leg
(7)



Spool Leg
(8)



Leg with Antique Brass Ferrule
(9)



Leg with Brushed Nickel Ferrule
(0)

- 4 Choose your molding.

Choose Double Welt or Nail Trim above molding. Molding is not available on Round or Skirt option ottomans.



Plain Square (A)
(2" high)



Beaded (B)
(2" high)



Channeled (C)
(2" high)



No Molding (X)

- 5 Choose your top style.



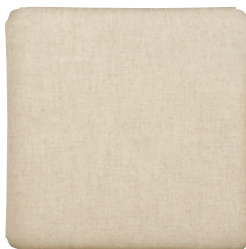
Biscuit Tufted Top (E)
(not available on Round)



Picture Frame Top (F)
(not available on Round)



Mitered Top with Button (M)



Plain Top (P)
(fabric only)



Plain Box Border;
French Stitched Top (S)
(fabric only)



Tufted Top (T)

- 6 Choose your nail trim and finish *(if applicable)*.

Nail trim is applied at base of ottoman. If a carved molding is selected, nail trim is applied at top of molding. All nail finishes are available. Nail trim is not available on Skirt option ottomans. NOTE: Deco (H), Tiles (K) and Links (L) nail patterns are not available when selected in combination with any of the 2" wood moldings, unless the ottoman is a base to the floor style.



Single Row (O)



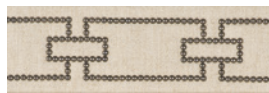
Double Row (D)
(2.25" spacing between rows)



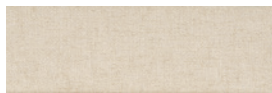
Deco (H)
(#9 nail only)



Tiles (K)
(#9 nail only)



Links (L)
(#9 nail only)



No Nails (N)



Proudly Upholstered & Hand-Finished in the USA

VANGUARD®
FURNITURE



WWW.VANGUARDFURNITURE.COM

MAKE IT YOURS BENCHES

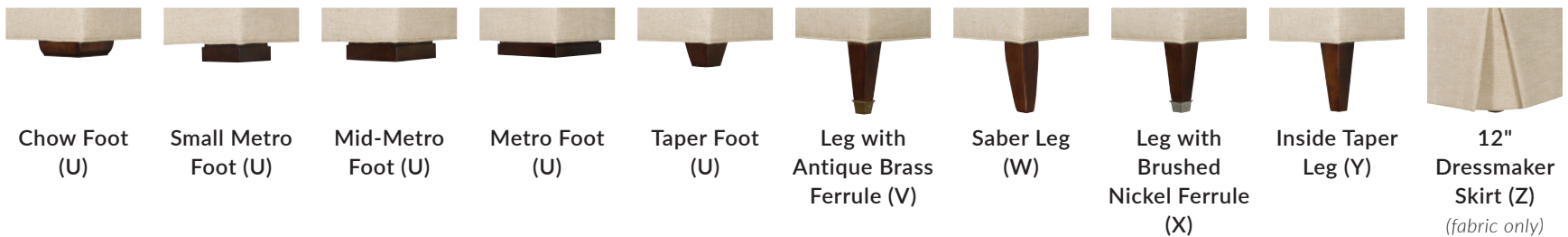
1 Choose your fabric or leather.

2 Choose your bench size.

Dimensions shown are widths. All benches are 22" deep. Benches with U legs are 19" high; benches with V, W, X, Y or Z legs are 18" high.



3 Choose your base (foot, leg or skirt) and a wood finish (*if applicable*).



4 Choose your storage option.

An optional storage cavity is available in unfinished cedar or non-cedar with lid support.

For Benches with Foot or Skirt:

- G 12" Storage Cavity (Non-Cedar)
- J Non-Storage
- K 12" Storage Cavity (Cedar)

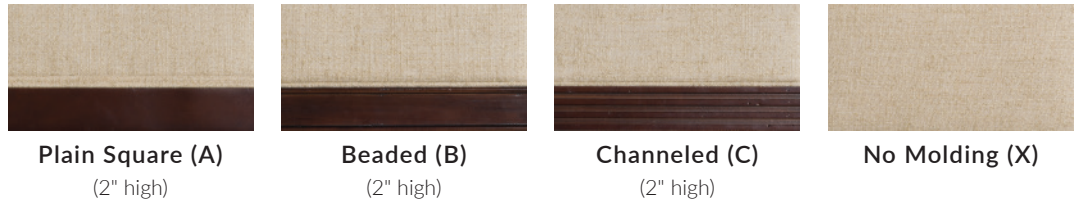
For Benches with Leg:

- M Non-Storage
- N 5" Storage Cavity (Cedar)
- Q 5" Storage Cavity (Non-Cedar)



5 Choose your molding.

Choose Double Welt or Nail Trim above molding. Molding is not available on Skirt option benches.

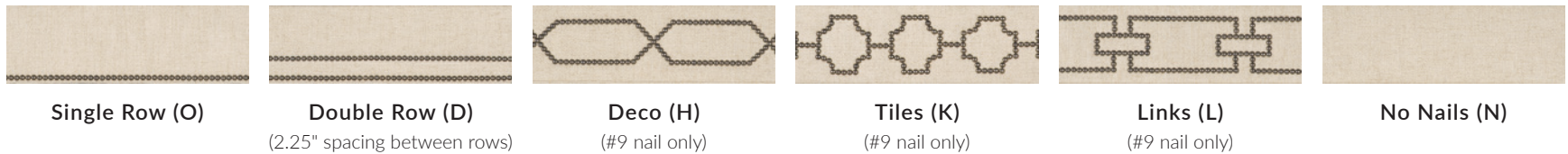


6 Choose your top style.



7 Choose your nail trim and finish (*if applicable*).

Nail trim is applied at base of bench. If a carved molding is selected, nail trim is applied at top of molding. All nail finishes are available. Nail trim is not available on Skirt option benches. NOTE: Deco (H), Tiles (K) and Links (L) nail patterns are not available when selected in combination with any of the 2" wood moldings, unless the ottoman is a base to the floor style.



Proudly Upholstered & Hand-Finished in the USA

VANGUARD®
FURNITURE



WWW.VANGUARDFURNITURE.COM