




make it  
yours®

## BEDROOM & LIFESTYLE CABINETS

Personalize your bedroom or lifestyle cabinet with a variety of options, including custom embellishments and hundreds of finish choices.

Making it yours is simple! Choose your bedroom case piece or lifestyle cabinet configuration. Choose your base. Choose your face. Choose your hardware and its place.

VANGUARD®  
FURNITURE



◆ **CC14G Vance Dresser.** Base: Metal Tube Leg (G) in Brushed Nickel. Face: Clip Corner (F03). Hardware: Premium Cupola Pull (H26) (*additional charge*)/Placement: One Column Centered on Each Drawer (P1). Finish: Sparrow with optional\* highlight striping around inside of clip corner in Platinum Metallic. \*Optional charges may apply.

# Make It Yours® Bedroom



Choose your bedroom case piece and add a base style. Select an overlay design for drawers and doors and choose a hardware option and placement. Add a personalized finish and an optional custom embellishment to create a look that is completely your own. Personalize your bedroom — *make it yours*.

## 1 CHOOSE your CASE.



**WILLIAMS**  
**CC01 Tall Dresser**  
W 73 D 22 H 30.25 (+base)  
Not available with F11 Drawer Face



**MCGUIRE**  
**CC02 Dresser**  
W 73 D 22 H 24.75 (+base)



**MCKINNEY**  
**CC03 Side Table**  
W 37.25 D 19 H 24.75 (+base)



**BARNES**  
**CC04 Side Table**  
W 37.25 D 19 H 24.75 (+base)



**MANNING**  
**CC05 Side Table**  
W 37.25 D 19 H 24.75 (+base)



**PROSSER**  
**CC06 Drawer Chest**  
W 48 D 22 H 28.25 (+base)



**GOTTFRIED**  
**CC07 Side Table**  
W 37.25 D 19 H 24.75 (+base)



**JONES**  
**CC08 Side Table**  
W 30 D 19 H 23 (+base)  
(tray pull will match hardware finish)



**CREMINS**  
**CC09 Side Table**  
W 30 D 19 H 23 (+base)



**HOLLAND**  
**CC10 Side Table**  
W 30 D 19 H 23 (+base)  
(tray pull will match hardware finish)



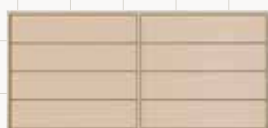
**TRACY**  
**CC11 Side Table**  
W 24 D 19 H 24.5 (+base)



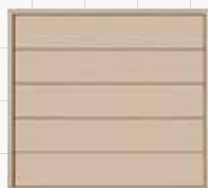
**CLAWSON**  
**CC12 Side Table**  
W 24 D 19 H 28  
NO BASE OPTIONS



**MILBURN**  
**CC13 Dresser**  
W 73 D 22 H 37.5 (+ base)  
Not available with F11 Drawer Face



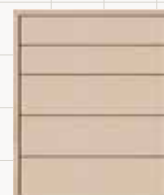
**VANCE**  
**CC14 Dresser**  
W 58.5 D 22 H 29.75 (+base)



**WILEY**  
**CC15 Tall Chest**  
W 48 D 22 H 45.5 (+base)

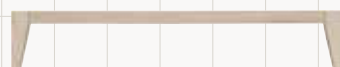


**BRITTON**  
**CC17 Small Drawer Chest**  
W 23.25 D 19 H 23 (+base)



**MERCER**  
**CC18 Tall Chest**  
W 37.25 D 19 H 47.75 (+base)  
Not available with F11 Drawer Face

## 2 CHOOSE your BASE.



**TAPERED LEG (A)**  
Base Height: 7"  
(CC11 Base Height: 4")



**BRACKET LEG (B)**  
Base Height: 5.75"  
(CC11 Base Height: 4")



**SABER LEG (C)**  
Base Height: 7" (CC11 Base Height: 4")  
Note: This base option increases overall width by 4".



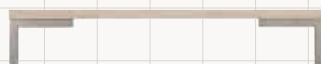
**PLINTH BASE (D)**  
Base Height: 4"  
(CC11 Base Height: 3")



**TURNED LEG (E)**  
Base Height: 7"  
(CC11 Base Height: 4")



**TURNED LEG WITH FERRULE (F)**  
Base Height: 7" (CC11 Base Height: 4")  
Ferrule Finish Available in Antique Bronze,  
Brushed Nickel or Satin Brass



**METAL TUBE LEG (G)**  
Base Height: 5.75" (CC11 & CC17 Base Height: 4")  
Metal Tube Finish Available in Antique Bronze,  
Brushed Nickel or Satin Brass



**STRETCHER BASE (H)**  
Base Height: 10"  
(CC11 & CC17 Base Height: 5")

## MAKE IT YOURS BEDROOM

### 3 CHOOSE *your* STANDARD OR OPTIONAL PREMIUM DRAWER OR DOOR FACE.

#### STANDARD DRAWER FACE OPTIONS

Refer to the Vanguard website and Price List for restrictions on select face/hardware combinations.



**OUTSIDE BEAD (F01)**



**INSIDE & OUTSIDE BEAD (F02)**

Not recommended with H13 Hardware. Not recommended with H06 Hardware on CC01, CC02, CC03, CC04 or CC07 Cases. Not recommended with H10, H11, H12, H13, H14, H15, H18, H21 or H29 Hardware on CC08, CC09 or CC10 Cases. Not recommended with H04, H06, H07, H09, H10, H11, H12, H13, H14, H15, H16, H17, H18, H20, H21, H22, H25, H26, H27, H28, H29 or H32 Hardware on CC11, CC12 and CC17 Cases.



**CLIP CORNER (F03)**

Not recommended with H07, H09, H13, H20, H29 or H32 Hardware on CC11, CC12 and CC17 Cases.



**THIN CLASSIC (F04)**

Recommended with H01, H02, H03, H08, H19, H22, H23, H24, H26, H27, H28, H30 and H31 Hardware only. Not recommended with H07, H09, H11, H13, H20, H29 or H32 Hardware on CC11, CC12 and CC17 Cases.



**BAMBOO (F05)**

Not available with combination finishes or highlight striping. Not recommended with H07, H09, H11, H13, H20, H29 or H32 Hardware on CC11, CC12 and CC17 Cases.



**S CURVE PANEL (F06)**

Not recommended with H13 Hardware. Not recommended with H10, H11, H12, H13, H15, H18, H21 or H29 Hardware on CC08, CC09 or CC10 Cases. Not recommended with H04, H07, H09, H10, H11, H12, H13, H14, H15, H16, H18, H20, H21, H25, H29 or H32 Hardware on CC11, CC12 and CC17 Cases.



**RIBBON (F07)**

Not recommended with H07, H20 or H32 Hardware on CC11, CC12 and CC17 Cases.



**GREEK KEY (F08)**

Not recommended with H07, H10, H13, H20, H29 or H32 Hardware on CC11, CC12 and CC17 Cases.



**CORDUROY (F09)**



**STEP PANEL (F10)**

Not recommended with H11, H12, H13, H21 or H29 Hardware on CC08, CC09 and CC10 Cases. Not recommended with H07, H09, H11, H13, H20, H29 or H32 Hardware on CC11, CC12 and CC17 Cases.



**MOD (F11) Paint & Leaf Finishes Only\* (Not available on CC01, CC13, CC18)**

Recommended with H01, H02, H03, H04, H05, H06, H07, H08, H19, H20, H22, H23, H24, H26, H27, H28, H30, H31 and H32 Hardware only. Not recommended with H09, H20, H25, H29 or H32 Hardware on CC11, CC12 and CC17 Cases. Not Recommended with H09, H20, H25, H29 or H32 Hardware on CC11, CC12 and CC17 Cases.



**GRASS CLOTH (F12)**

Not Recommended with H20 or H32 Hardware on CC11, CC12 and CC17 Cases.



**CLEAN (F13)**

Not Recommended with H20 or H32 Hardware on CC11, CC12 and CC17 Cases.

MAKE IT YOURS BEDROOM

STANDARD DOOR FACE OPTIONS

Refer to the Vanguard website and Price List for restrictions on select face/hardware combinations.



OUTSIDE BEAD (F01)



INSIDE & OUTSIDE BEAD (F02)



CLIP CORNER (F03)



THIN CLASSIC (F04)

Not recommended with H18 Hardware.  
Not recommended with H08, H09, H11, H13, H16, H17, H19, H21, H22, H25, H29 or H31 Hardware in P3 Position (centered on doors).



BAMBOO (F05)

Not available with combination finishes or highlight striping.



S CURVE PANEL (F06)



RIBBON (F07)



GREEK KEY (F08)



CORDUROY (F09)



STEP PANEL (F10)



MOD (F11)

Paint & Leaf Finishes Only\*  
Not recommended with H09, H13, H16, H17, H18 or H25 Hardware.



GRASS CLOTH (F12)



CLEAN (F13)

## MAKE IT YOURS BEDROOM

### OPTIONAL PREMIUM DRAWER/DOOR FACE OPTIONS *(additional charge)*

Refer to the Vanguard website and Price List for restrictions on select face/hardware combinations.



**ASH BURL (F14)**

Available in all Standard Stain Finishes and Recommended Burl Finishes. Shown in Moon Shadow.



**AMATE (F15)  
Café**



**AMATE (F15)  
Natural**



**AMATE (F15)  
Slate**



**BIRD'S EYE MAPLE (F16)**

Available in all Standard Stain Finishes. Shown in Moon Shadow.



**BONE CHEVRON (F17)**



**BONE CIRCLE (F18)**



**COCONUT FIBER (F19)**



**WHITE CAPIZ (F22)**



**SHAGREEN (F23)  
Blue Tabac**



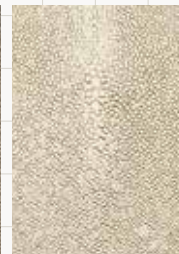
**SHAGREEN (F23)  
Charcoal**



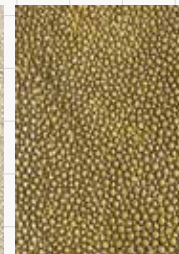
**SHAGREEN (F23)  
Dew**



**SHAGREEN (F23)  
Fog**



**SHAGREEN (F23)  
Mist**



**SHAGREEN (F23)  
Sand**



**SHAGREEN (F23)  
Silverlake**

## MAKE IT YOURS BEDROOM

### 4 CHOOSE *your* STANDARD OR OPTIONAL PREMIUM HARDWARE.

All STANDARD hardware, unless noted, available in Antique Bronze, Brushed Nickel or Satin Brass.

#### STANDARD HARDWARE

Refer to the Vanguard website and Price List for restrictions on select face/hardware combinations.



**Round Ball Pull  
(H01)**

Diameter 1.25  
Shown in Satin Brass



**Round Frosted Glass Pull  
(H02)**

Diameter 1.375  
**Not Available in Antique Bronze**  
Shown in Satin Brass



**Namaste Pull  
(H03)**

W 1 H 1  
Shown in Satin Brass



**Tranquility Pull  
(H04)**

W 1.5 H 2  
Shown in Satin Brass



**Small Wallace Pull  
(H05)**

W 1.5 H 1.5  
Shown in Satin Brass



**Large Wallace Pull  
(H06)**

W 2.375 H 2.375  
Shown in Satin Brass



**Oval Pull Vertical  
(H07)**

W 1.5625 H 3.875  
Shown in Brushed Nickel



**Oval Pull Horizontal  
(H08)**

W 3.875 H 1.5625  
Shown in Brushed Nickel



**Trumpet Pull with  
Backplate (H09)**

Diameter 2.5  
Shown in Satin Brass



**Small Ring  
(H10)**

W 2 H 2.5  
Shown in Satin Brass



**Large Ring  
(H11)**

W 2.75 H 3.3125  
Shown in Satin Brass



**Teardrop Ring  
(H12)**

W 1.375 H 2.5  
Shown in Satin Brass



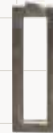
**Lion's Head  
(H13)**

W 2.5 H 3.625  
Shown in Brushed Nickel



**Deco Pendant  
(H14)**

W 0.75 H 2.25  
Shown in Brushed Nickel



**Modern Pendant  
(H15)**

W 0.875 H 2.625  
Shown in Brushed Nickel



**Crescent Bail Pull  
(H16)**

W 5.125 H 2  
Shown in Antique Bronze



**Classic Bail Pull  
(H17)**

W 5.5 H 1.5  
Shown in Satin Brass



**Modern Bail Pull  
(H18)**

W 7 H 2.125  
Shown in Satin Brass



**Acrylic Bar Horizontal  
(H19)**

W 7.5 H 0.625  
Shown in Brushed Nickel



**Acrylic Bar Vertical  
(H20)**

W 0.625 H 7.5  
Shown in Brushed Nickel

## MAKE IT YOURS BEDROOM

### OPTIONAL PREMIUM HARDWARE *(additional charge)*

Refer to the Vanguard website and Price List for restrictions on select face/hardware combinations.

Only H21, H22 and H23 PREMIUM hardware options are available in Antique Bronze, Brushed Nickel or Satin Brass. Refer to individual hardware for material and finish.



**Laurel Wreath Pull  
(H21)**  
W 2.5 H 2.5  
*Shown in Brushed Nickel*



**Cassanova Pull  
(H22)**  
W 2.5 H 2.5  
*Shown in Antique Bronze*



**Midas Pull  
(H23)**  
W 2 H 2  
*Shown in Brushed Nickel*



**Crystal Pull  
(H24)**  
Diameter 1.75  
*Black Mist Base*



**Michaelangelo Stone Bar  
(H25)**  
W 5.5 H 2  
*Jazz Marble and Aged Brass*



**Cupola Pull  
(H26)**  
Diameter 1.5 H 1.1875  
*Mother of Pearl and  
Polished Stainless Steel*



**Ripple Agate Pull  
(H27)**  
Diameter 3.5 H 1.75  
*Agate and Polished Stainless Steel*



**Donnatello Stone Pull  
(H28)**  
Diameter 1.875 H 1.625  
*Jazz Marble and  
Polished Stainless Steel*



**Vermeer Pendant  
(H29)**  
W 2.5 D 1.1875 H 3.375  
*Mother of Pearl and  
Polished Stainless Steel*



**Derby Pull Horizontal  
(H31)**  
W 7.5 H 0.625  
*Black Wrapped Leather and  
Brushed Stainless Steel*



**Derby Pull Vertical  
(H32)**  
W 0.625 H 7.5  
*Black Wrapped Leather and  
Brushed Stainless Steel*



**Deco Pull  
(H33)**  
Diameter 2 H 1.25  
*Jazz Marble*

5

**CHOOSE your PLACE.** Select the placement/position of hardware on drawers and doors.



**One Column Centered on Each Drawer (P1)**  
*Shown: Ribbon Drawer Face (F07) in Dove Gray Finish; One Crescent Bail Pull (H16) in Antique Bronze*



**Two Columns Equally Offset from Center on Each Drawer (P2)**  
*(additional charge for this option in both standard and premium hardware)*  
*Shown: Ribbon Drawer Face (F07) in Dove Gray Finish; Two Crescent Bail Pulls (H16) in Antique Bronze*



**One Centered on Each Door (P3)**  
*Shown: Clip Corner Door Face (F03) in Harrison Gray  
Finish; One Lion's Head Pull (H13) in Brushed Nickel*



**One Centered on Inner Edge  
of Each Door (P4)**  
*Shown: Corduroy Door Face (F09) in Barrington  
Finish; One Namaste Pull (H03) in Satin Brass*

## MAKE IT YOURS BEDROOM

### 6 CHOOSE *your* FINISH. ADD AN OPTIONAL CUSTOM EMBELLISHMENT.

Select from hundreds of finishes — standard stain, paint or metallic paint finish, MIY paint, artisan wood finish or premium leaf finish. You can even make it a combination finish with contrasting drawers, doors, tops, end panels or face styles (\*note that certain face styles can only take a paint finish). Make a bold statement with high contrast choices, or go for an understated look with tone-on-tone or low contrasting personalized finish options.



Customize your piece even further by adding an optional embellishment such as highlight striping, pattern striping, sheen level option or distressing level. *\*Optional charges may apply.*

GET CREATIVE AND *make it yours!*



**WILLIAMS  
CC01A Tall Dresser**

Base: Tapered Leg (A). Face: Outside Bead (F01). Hardware: Acrylic Bar Horizontal (H19) in Brushed Nickel/Placement: One Column Centered on Each Drawer (P1). Finish: Langdon.



**MCGUIRE  
CC02B Dresser**

Base: Bracket Leg (B). Face: Clean (F13). Hardware: Crescent Bail Pull (H16) in Satin Brass/Placement: Two Columns Equally Offset from Center on Each Drawer (P2) (*additional charge*). Finish: Moon Shadow.



**MCKINNEY  
CC03G Side Table**

Base: Metal Tube Leg (G) in Satin Brass. Face: Greek Key (F08). Hardware: Small Wallace Pull (H05) in Satin Brass/Placement: One Column Centered on Each Drawer (P1). Finish: Wrenn.



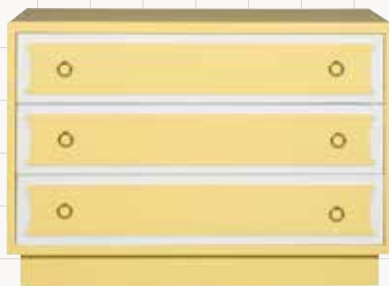
**BARNES  
CC04B Side Table**

Base: Bracket Leg (B). Face: Premium\* Bone Circle (F18) (*additional charge*). Hardware: Round Ball Pull (H01) in Brushed Nickel/Placement: Two Columns Equally Offset on Drawer (P2) (*additional charge*). Finish: MIY Paint in Benjamin Moore 2120-40 Smoke Gray.



**MANNING  
CC05A Side Table**

Base: Tapered Leg (A). Face: Clip Corner (F03). Hardware: Lion's Head (H13) in Brushed Nickel/Placement: One Centered on Each Door (P3). Finish: Harrison Gray with optional\* highlight striping in Platinum Metallic. *\*Optional charges may apply.*



**PROSSER  
CC06D Drawer Chest**

Base: Plinth Base (D). Face: Ribbon (F07). Hardware: Small Ring (H10) in Satin Brass/Placement: Two Columns Equally Offset from Center on Each Drawer (P2) (*additional charge*). Finish (combination\*): Pure White (outside of drawer design); MIY Paint, Pristine Flat in Sherwin Williams June Day SW 6682. *\*Optional charges may apply.*



**GOTTFRIED  
CC07E Side Table**

Base: Turned Leg (E). Face: Premium Bone Chevron (F17) (*additional charge*). Hardware: Trumpet Pull (H09) in Satin Brass/Placement: One Column Centered on Drawer (P1). Finish: Flaxen Stone.



**JONES  
CC08G Side Table**

Base: Metal Tube Leg (G) in Brushed Nickel. Face: Corduroy (F09). Hardware: Oval Pull Horizontal (H08) in Brushed Nickel/Placement: One Column Centered on Drawer (P1). Finish: Silverthorne.

## MAKE IT YOURS BEDROOM

GET CREATIVE AND *make it yours!*



**CREMINS  
CC09A Side Table**

Base: Tapered Leg (G). Face: Clean (F13). Hardware: Premium Ripple Agate Pull (H27) (additional charge)/Placement: One Column Centered on Each Drawer (P1). Finish: Finley.



**HOLLAND  
CC10C Side Table**

Base: Saber Leg (C). Face: Premium Charcoal Shagreen (F23) (additional charge). Hardware: Acrylic Bar Horizontal (H19)/Placement: One Column Centered on Drawer (P1). Finish: Silver Shimmer.



**TRACY  
CC11D Side Table**

Base: Plinth Base (D). Face: Inside & Outside Bead (F02). Hardware: Small Ring Pull (H10) in Brushed Nickel/Placement: One Column Centered on Drawer (P1). Finish: Hampton.



**CLAWSON  
CC12 Side Table**

Face: Step Panel (F10). Hardware: Round Ball Pull (H01) in Brushed Nickel/Placement: One Column Centered on Drawer (P1). Finish: Boardwalk Gray. *Note: No base options.*



**MILBURN  
CC13A Dresser**

Base: Tapered Leg (A). Face: Outside Bead (F01). Hardware: Deco Pendant (H14) in Brushed Nickel/Placement: One Column Centered on Each Drawer (P1). Finish: Dove Gray.



**VANCE  
CC14G Dresser**

Base: Metal Tube Leg (G) in Brushed Nickel. Face: Clip Corner (F03). Hardware: Premium Cupola Pull (H26) (additional charge)/Placement: One Column Centered on Each Drawer (P1). Finish: Sparrow with optional\* highlight striping in Platinum Metallic around inside of clip corner. *\*Optional charges may apply.*



**WILEY  
CC15F Tall Chest**

Base: Turned Leg with Ferrules (F) in Brushed Nickel. Face: S Curve Panel (F06). Hardware: Premium Crystal Pull (H24) (additional charge)/Placement: One Column Centered on Each Drawer (P1). Finish: MIY Paint, Pristine Flat in Benjamin Moore HC-143 Wythe Blue.



**BRITTON  
CC17G Side Table**

Base: Metal Tube Leg (G) in Brushed Nickel. Face: Corduroy (F09). Hardware: Namaste Pull (H03) in Brushed Nickel/Placement: One Column Centered on Each Drawer (P1). Finish: Wrenn.



**MERCER  
CC18A Tall Chest**

Base: Tapered Leg (A). Face: Outside Bead (F01). Hardware: Classic Bail Pull (H17) in Brushed Nickel/Placement: One Centered on Each Door (P3). Finish: Woodland.

Explore a world of possibilities in one easy online visualizer at [vanguardfurniture.com/MIYBedroom](http://vanguardfurniture.com/MIYBedroom).

To see more examples of what is possible, visit our community Pinterest page at [pinterest.com/vanguardfurn](http://pinterest.com/vanguardfurn). We encourage you to post here too!



◆ **CC13A Milburn Dresser.** Base: Tapered Leg (A). Face: Outside Bead (F01). Hardware: Deco Pendant (H14) in Brushed Nickel/Placement: One Column Centered on Each Drawer (P1). Finish: Dove Gray. **V439-CHH Rivers Chair and Half (2).** Fabric: Trio Spa; standard 13"x30" kidney pillow in Freefall Teal with optional contrast welt in Vault Forest. Finish: Dove Gray.



◉ **Left to Right: CC15F Wiley Tall Chest.** Base: Turned Leg with Ferrules (F) in Brushed Nickel. Face: S Curve Panel (F06). Hardware: Premium Crystal Pull (H24) (*additional charge*)/Placement: One Column Centered on Each Drawer (P1). Finish: MIY Paint, Pristine Flat in Benjamin Moore HC-143 Wythe Blue. **CC03E McKinney Side Tables (2).** Base: Turned Leg (E). Face: Bamboo (F05). Hardware: Premium Crystal Pull (H24) (*additional charge*)/Placement: One Column Centered on Each Drawer (P1). Finish: Sparrow. **592DK-PF Kelsey King Platform Bed (Make It Yours Sleep On It Beds).** Fabric: Audrey Seafoam. Bracket Legs with optional\* Wood Molding. Finish: Dove Gray. Shown with three extra\* MP129 pillows in Vault Breeze. **V485-CH Merrill Chair.** Fabric: Kyler Seamist. Finish: Flaxen Stone. *\*Optional charges may apply.*





◉ **Left to Right: CC14A Vance Dresser.** Base: Tapered Leg (A). Face: Step Panel (F10). Hardware: Crescent Bail Pull (H16) in Antique Bronze/Placement: One Column Centered on Each Door (P1). Finish: Flaxen Stone. **CC15F Wiley Tall Chest.** Base: Turned Leg with Ferrules (F) in Brushed Nickel. Face: S Curve Panel (F06). Hardware: Premium Crystal Pull (H24) (*additional charge*)/Placement: One Column Centered on Each Drawer (P1). Finish: MIY Paint, Pristine Flat in Benjamin Moore HC-143 Wythe Blue. **CC18A Mercer Tall Chest.** Base: Tapered Leg (A). Face: Outside Bead (F01). Hardware: Classic Bail Pull (H17) in Brushed Nickel/Placement: One Column Centered on Each Drawer (P1). Finish: Woodland. **CC13A Milburn Dresser.** Base: Tapered Leg (A). Face: Outside Bead (F01). Hardware: Deco Pendant (H14) in Brushed Nickel/Placement: One Column Centered on Each Drawer (P1). Finish: Dove Gray. **CC14G Vance Dresser.** Base: Metal Tube Leg (G) in Brushed Nickel. Face: Clip Corner (F03). Hardware: Premium Cupola Stone Pull (H26) (*additional charge*)/Placement: One Column Centered on Each Drawer (P1). Finish: Sparrow with optional\* highlight striping around inside of clip corners in Platinum Metallic. *\*Optional charges may apply.*





◆ Left to Right: **CC07E Gottfried Side Table**. Base: Turned Leg (E). Face: Outside Bead (F01). Hardware: Premium Crystal Pull (H24) (additional charge)/Placement: One Column Centered on Drawer (P1). Finish: Silver Shimmer. **V1739KHF Jasper King Bed (Vanguard)**. Fabric: Kaylee Linen. Finish: Silver Shimmer. Shown with three extra\* MP129 pillows in Vault Plum. **CC05E Manning Side Table**. Base: Turned Leg (E). Face: Premium White Capiz (F22) (additional charge). Hardware: Premium Crystal Pull (H24) (additional charge)/Placement: One Centered on Inner Edge of Each Door (P4). Finish: Silver Shimmer. **CC02D McGuire Dresser**. Base: Plinth Base (D). Face: Premium White Capiz (F22) (additional charge). Hardware: Premium Crystal Pull (H24) (additional charge)/Placement: One Column Centered on Each Drawer (P1). Finish: Silver Shimmer. **L053T-OT Lytton Leather Ottoman (Vanguard)**. Leather: Hollywood Champagne. Finish: Luxe. **V885W-SW Linette Swivel Chair (Vanguard)**. Fabric: Neve Linen with optional\* contrast corner skirt blocks in Jake Stone. \*Optional charges may apply.



🔗 **CC40A Foster Lifestyle Cabinet.**

Base: Tapered Leg (A). Face:  
Inside & Outside Bead (F02).  
Hardware: Premium Cassanova  
Pull (H22) (*additional charge*) in  
Antique Bronze/Placement: One  
Column Centered on Each Drawer  
(P1); One Centered on Each  
Door (P3). Finish: Dove Gray with  
optional\* highlight striping around  
inside bead in Platinum Metallic.  
*\*Optional charges may apply.*



# Make It Yours® Lifestyle Cabinets



Choose from an assortment of cabinet configurations to create your own custom entertainment center, storage console, dining buffet, bedroom dresser and more. Add a base style, a face style for doors and drawers, and a hardware option and placement. Then select a personalized finish and an optional custom embellishment to create a look that is completely your own. Personalize your lifestyle cabinet — *make it yours*.

## 1 CHOOSE *your* CABINET CONFIGURATION.



**FOSTER**  
**CC40 Lifestyle Cabinet**  
W 73 D 22 H 32 (+base)  
Two Drawers, Four Doors

**SOLENE Two-Cabinet Configurations** Overall: W (with top) 76.25 D 19.75 H 26.25 (+base) All have a 1.5" solid top that spans the entire width of the configuration with a slight overhang.



**CC20 Lifestyle Cabinet**  
Left: One Drawer, Removable Glass Shelf.  
Right: One Drawer, Removable Glass Shelf.



**CC21 Lifestyle Cabinet**  
Left: Two Doors, Interior Shelf.  
Right: Two Doors, Interior Shelf.



**CC22 Lifestyle Cabinet**  
Left: Two Doors, Interior Shelf.  
Right: One Drawer, Removable Glass Shelf.



**CC23 Lifestyle Cabinet**  
Left: One Drawer, Removable Glass Shelf.  
Right: Two Doors, Interior Shelf.

**SOLENE Three-Cabinet Configurations** Overall: W (with top) 113.5 D 19.75 H 26.25 (+base) All have a 1.5" solid top that spans the entire width of the configuration with a slight overhang.



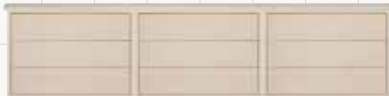
**CC30 Lifestyle Cabinet**  
Left: Three Drawers. Center: Two Doors, Interior Shelf.  
Right: Three Drawers.



**CC31 Lifestyle Cabinet**  
Left: One Drawer, Removable Glass Shelf. Center: Two Doors, Interior Shelf. Right: One Drawer, Removable Glass Shelf.



**CC32 Lifestyle Cabinet**  
Left: Two Doors, Interior Shelf. Center: Two Doors, Interior Shelf. Right: Two Doors, Interior Shelf.



**CC33 Lifestyle Cabinet**  
Left: Three Drawers. Center: Three Drawers.  
Right: Three Drawers.



**CC34 Lifestyle Cabinet**  
Left: One Drawer, Removable Glass Shelf. Center: Three Drawers. Right: One Drawer, Removable Glass Shelf.



**CC35 Lifestyle Cabinet**  
Left: Two Doors, Interior Shelf. Center: Three Drawers.  
Right: Two Doors, Interior Shelf.



**CC36 Lifestyle Cabinet**  
Left: Three Drawers. Center: One Drawer, Removable Glass Shelf. Right: Three Drawers.



**CC37 Lifestyle Cabinet**  
Left: One Drawer, Removable Glass Shelf. Center: One Drawer, Removable Glass Shelf. Right: One Drawer, Removable Glass Shelf.



**CC38 Lifestyle Cabinet**  
Left: Two Doors, Interior Shelf. Center: One Drawer, Removable Glass Shelf. Right: Two Doors, Interior Shelf.

## 2 CHOOSE *your* BASE.



**TAPERED LEG (A)**  
Base Height: 7"



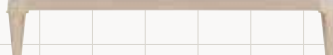
**BRACKET LEG (B)**  
Base Height: 5.75"



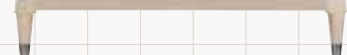
**SABER LEG (C)**  
Base Height: 7"  
Note: This base option increases overall width by 4".



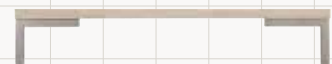
**PLINTH BASE (D)**  
Base Height: 4"



**TURNED LEG (E)**  
Base Height: 7"



**TURNED LEG WITH FERRULE (F)**  
Base Height: 7"  
Ferrule Finish Available in Antique Bronze, Brushed Nickel or Satin Brass



**METAL TUBE LEG (G)**  
Base Height: 5.75"  
Metal Tube Finish Available in Antique Bronze, Brushed Nickel or Satin Brass



**STRETCHER BASE (H)**  
Base Height: 10"

## MAKE IT YOURS LIFESTYLE CABINETS

### 3 CHOOSE *your* STANDARD OR OPTIONAL PREMIUM DRAWER OR DOOR FACE.

#### STANDARD DRAWER FACE OPTIONS

Refer to the Vanguard website and Price List for restrictions on select face/hardware combinations.



**OUTSIDE BEAD (F01)**



**INSIDE & OUTSIDE BEAD (F02)**

Not recommended with H13 Hardware. Not recommended with H06 Hardware on CC20, CC22, CC23, CC31, CC34, CC36, CC37 and CC38 Cases.



**CLIP CORNER (F03)**



**THIN CLASSIC (F04)**

Recommended with H01, H02, H03, H08, H19, H22, H23, H24, H26, H27, H28, H30 and H31 Hardware only.



**BAMBOO (F05)**

Not available with combination finishes or highlight striping.



**S CURVE PANEL (F06)**

Not recommended with H13 Hardware.



**RIBBON (F07)**



**GREEK KEY (F08)**



**CORDUROY (F09)**

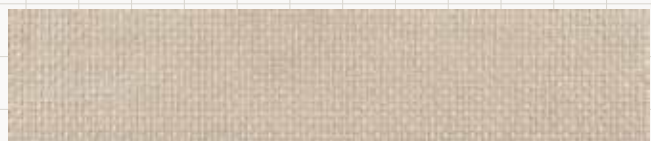


**STEP PANEL (F10)**



**MOD (F11) Paint & Leaf Finishes Only\***

Recommended with H01, H02, H03, H04, H05, H06, H07, H08, H19, H20, H22, H23, H24, H26, H27, H28, H30, H31 and H32 Hardware only.



**GRASS CLOTH (F12)**



**CLEAN (F13)**

## MAKE IT YOURS LIFESTYLE CABINETS

### STANDARD DOOR FACE OPTIONS

Refer to the Vanguard website and Price List for restrictions on select face/hardware combinations.



**OUTSIDE BEAD (F01)**



**INSIDE & OUTSIDE BEAD (F02)**



**CLIP CORNER (F03)**



**THIN CLASSIC (F04)**

Not recommended with H18 Hardware.  
Not recommended with H08, H09, H11, H13, H16, H17, H19, H21, H22, H25, H29 or H31 Hardware in P3 Position (centered on doors).



**BAMBOO (F05)**

Not available with combination finishes or highlight striping.



**S CURVE PANEL (F06)**



**RIBBON (F07)**



**GREEK KEY (F08)**



**CORDUROY (F09)**



**STEP PANEL (F10)**



**MOD (F11)**

Paint & Leaf Finishes Only\*  
Not recommended with H09, H13, H16, H17, H18 or H25 Hardware.



**GRASS CLOTH (F12)**



**CLEAN (F13)**

## MAKE IT YOURS LIFESTYLE CABINETS

### OPTIONAL PREMIUM DRAWER/DOOR FACE OPTIONS *(additional charge)*

Refer to the Vanguard website and Price List for restrictions on select face/hardware combinations.



**ASH BURL (F14)**

Available in all Standard Stain Finishes and Recommended Burl Finishes. Shown in Moon Shadow.



**AMATE (F15)  
Café**



**AMATE (F15)  
Natural**



**AMATE (F15)  
Slate**



**BIRD'S EYE MAPLE (F16)**  
Available in all Standard Stain Finishes.  
Shown in Moon Shadow.



**BONE CHEVRON (F17)**



**BONE CIRCLE (F18)**



**COCONUT FIBER (F19)**



**WHITE CAPIZ (F22)**



**SHAGREEN (F23)  
Blue Tabac**



**SHAGREEN (F23)  
Charcoal**



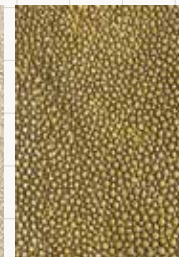
**SHAGREEN (F23)  
Dew**



**SHAGREEN (F23)  
Fog**



**SHAGREEN (F23)  
Mist**



**SHAGREEN (F23)  
Sand**



**SHAGREEN (F23)  
Silverlake**

## MAKE IT YOURS LIFESTYLE CABINETS

### 4 CHOOSE *your* STANDARD OR OPTIONAL PREMIUM HARDWARE.

All STANDARD hardware, unless noted, available in Antique Bronze, Brushed Nickel or Satin Brass.

#### STANDARD HARDWARE

Refer to the Vanguard website and Price List for restrictions on select face/hardware combinations.



**Round Ball Pull  
(H01)**

Diameter 1.25  
Shown in Satin Brass



**Round Frosted Glass Pull  
(H02)**

Diameter 1.375  
**Not Available in Antique Bronze**  
Shown in Satin Brass



**Namaste Pull  
(H03)**

W 1 H 1  
Shown in Satin Brass



**Tranquility Pull  
(H04)**

W 1.5 H 2  
Shown in Satin Brass



**Small Wallace Pull  
(H05)**

W 1.5 H 1.5  
Shown in Satin Brass



**Large Wallace Pull  
(H06)**

W 2.375 H 2.375  
Shown in Satin Brass



**Oval Pull Vertical  
(H07)**

W 1.5625 H 3.875  
Shown in Brushed Nickel



**Oval Pull Horizontal  
(H08)**

W 3.875 H 1.5625  
Shown in Brushed Nickel



**Trumpet Pull with  
Backplate (H09)**

Diameter 2.5  
Shown in Satin Brass



**Small Ring  
(H10)**

W 2 H 2.5  
Shown in Satin Brass



**Large Ring  
(H11)**

W 2.75 H 3.3125  
Shown in Satin Brass



**Teardrop Ring  
(H12)**

W 1.375 H 2.5  
Shown in Satin Brass



**Lion's Head  
(H13)**

W 2.5 H 3.625  
Shown in Brushed Nickel



**Deco Pendant  
(H14)**

W 0.75 H 2.25  
Shown in Brushed Nickel



**Modern Pendant  
(H15)**

W 0.875 H 2.625  
Shown in Brushed Nickel



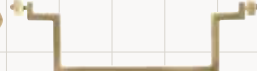
**Crescent Bail Pull  
(H16)**

W 5.125 H 2  
Shown in Antique Bronze



**Classic Bail Pull  
(H17)**

W 5.5 H 1.5  
Shown in Satin Brass



**Modern Bail Pull  
(H18)**

W 7 H 2.125  
Shown in Satin Brass



**Acrylic Bar Horizontal  
(H19)**

W 7.5 H 0.625  
Shown in Brushed Nickel



**Acrylic Bar Vertical  
(H20)**

W 0.625 H 7.5  
Shown in Brushed Nickel

## MAKE IT YOURS LIFESTYLE CABINETS

### OPTIONAL PREMIUM HARDWARE *(additional charge)*

Refer to the Vanguard website and Price List for restrictions on select face/hardware combinations.

Only H21, H22 and H23 PREMIUM hardware options are available in Antique Bronze, Brushed Nickel or Satin Brass. Refer to individual hardware for material and finish.



**Laurel Wreath Pull  
(H21)**  
W 2.5 H 2.5  
*Shown in Brushed Nickel*



**Cassanova Pull  
(H22)**  
W 2.5 H 2.5  
*Shown in Antique Bronze*



**Midas Pull  
(H23)**  
W 2 H 2  
*Shown in Brushed Nickel*



**Crystal Pull  
(H24)**  
Diameter 1.75  
*Black Mist Base*



**Michaelangelo Stone Bar  
(H25)**  
W 5.5 H 2  
*Jazz Marble and Aged Brass*



**Cupola Pull  
(H26)**  
Diameter 1.5 H 1.1875  
*Mother of Pearl and  
Polished Stainless Steel*



**Ripple Agate Pull  
(H27)**  
Diameter 3.5 H 1.75  
*Agate and Polished Stainless Steel*



**Donnatello Stone Pull  
(H28)**  
Diameter 1.875 H 1.625  
*Jazz Marble and  
Polished Stainless Steel*



**Vermeer Pendant  
(H29)**  
W 2.5 D 1.1875 H 3.375  
*Mother of Pearl and  
Polished Stainless Steel*



**Derby Pull Horizontal  
(H31)**  
W 7.5 H 0.625  
*Black Wrapped Leather and  
Brushed Stainless Steel*



**Derby Pull Vertical  
(H32)**  
W 0.625 H 7.5  
*Black Wrapped Leather and  
Brushed Stainless Steel*



**Deco Pull  
(H33)**  
Diameter 2 H 1.25  
*Jazz Marble*

5

### CHOOSE *your* PLACE. Select the placement/position of hardware on drawers and doors.



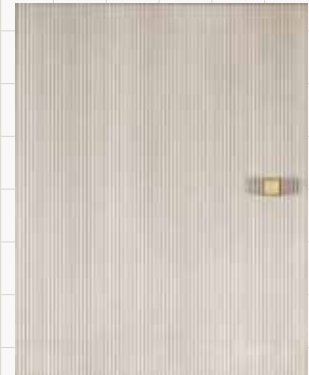
**One Column Centered on Each Drawer (P1)**  
*Shown: Ribbon Drawer Face (F07) in Dove Gray Finish; One Crescent Bail Pull (H16) in Antique Bronze*



**Two Columns Equally Offset from Center on Each Drawer (P2)**  
*(additional charge for this option in both standard and premium hardware)*  
*Shown: Ribbon Drawer Face (F07) in Dove Gray Finish; Two Crescent Bail Pulls (H16) in Antique Bronze*



**One Centered on Each Door (P3)**  
*Shown: Clip Corner Door Face (F03) in Harrison Gray  
Finish; One Lion's Head Pull (H13) in Brushed Nickel*



**One Centered on Inner Edge  
of Each Door (P4)**  
*Shown: Corduroy Door Face (F09) in Barrington  
Finish; One Namaste Pull (H03) in Satin Brass*

## MAKE IT YOURS LIFESTYLE CABINETS

### 6 CHOOSE *your* FINISH. ADD AN OPTIONAL CUSTOM EMBELLISHMENT.

Select from hundreds of finishes — standard stain, paint or metallic paint finish, MIY paint, artisan wood finish or premium leaf finish. You can even make it a combination finish with contrasting drawers, doors, tops, end panels or face styles (\*note that certain face styles can only take a paint finish). Make a bold statement with high contrast choices, or go for an understated look with tone-on-tone or low contrasting personalized finish options.



Customize your piece even further by adding an optional embellishment such as highlight striping, pattern striping, sheen level option or distressing level. *\*Optional charges may apply.*

GET CREATIVE AND *make it yours!*



**SOLENE  
CC20D Lifestyle Cabinet**

Base: Plinth Base (D). Face: Greek Key (F08). Hardware: Premium Donnatello Stone Pull (H28) (additional charge)/Placement: One Column Centered on Each Drawer (P1). Finish: Marquis.



**SOLENE  
CC21A Lifestyle Cabinet**

Base: Tapered Leg (A). Face: Thin Classic (F04). Hardware: Modern Pendant (H15) in Antique Bronze/Placement: One Centered on Each Door (P3). Finish: Dove Gray with optional\* highlight striping in MIY Paint, Pristine Flat in Benjamin Moore OC-64 Pure White. *\*Optional charges may apply.*



**SOLENE  
CC22G Lifestyle Cabinet**

Base: Metal Tube Leg (G) in Brushed Nickel. Face: Mod (F11). Hardware: Acrylic Bar Horizontal (H19) in Brushed Nickel/Placement: One Centered on Each Door (P3); One Column Centered on Drawer (P1). Finish: Pure White.



**FOSTER  
CC40A Lifestyle Cabinet**

Base: Tapered Leg (A). Face: Inside & Outside Bead (F02). Hardware: Premium Cassanova Pull (H22) (additional charge) in Antique Bronze/Placement: One Column Centered on Each Drawer (P1); One Centered on Each Door (P3). Finish: Dove Gray with optional\* highlight striping around inside bead in Platinum Metallic. *\*Optional charges may apply.*

MAKE IT YOURS LIFESTYLE CABINETS

GET CREATIVE AND *make it yours!*



**SOLENE**  
**CC36A Lifestyle Cabinet**

Base: Tapered Leg (A). Face: Thin Classic (F04). Hardware: Round Frost Glass Pull (H02) in Satin Brass/Placement: One Column Centered on Each Drawer (P1). Finish: Dove Gray with optional\* highlight striping in MIY Paint, Pristine Flat in Benjamin Moore OC-64 Pure White.

*\*Optional charges may apply. Center cabinet shown without adjustable glass shelf.*



**SOLENE**  
**CC38B Lifestyle Cabinet**

Base: Bracket Leg (B). Face: Corduroy (F09). Hardware: Large Wallace Pull (H06) in Satin Brass/Placement: One Centered on Inner Edge of Each Door (P4); One Column Centered on Drawer (P1). Finish (combination\*): Finley on case; Flaxen Stone on base. *\*Optional charges may apply.*



**SOLENE**  
**CC37B Lifestyle Cabinet**

Base: Bracket Leg (B). Face: Premium Bone Circle (F18) (*additional charge*). Hardware: Large Ring (H11) in Brushed Nickel/Placement: One Column Centered on Each Drawer (P1). Finish: Dupree.

**Explore a world of possibilities in one easy online visualizer  
at [vanguardfurniture.com/MIYLifestyleCabinets](http://vanguardfurniture.com/MIYLifestyleCabinets).**

To see more examples of what is possible, visit our community Pinterest page  
at [pinterest.com/vanguardfurn](http://pinterest.com/vanguardfurn). We encourage you to post here too!

◎ **CC38B Solene Lifestyle Cabinet.** Base: Bracket Leg (B). Face: Corduroy (F09). Hardware: Large Wallace Pull (H06) in Satin Brass/Placement: One Centered on Inner Edge of Each Door (P4); One Column Centered on Drawer (P1). Finish (combination\*): Finley on case; Flaxen Stone on base. **V866-2S Brandt Sofa.** Fabric: Impala Linen; two standard 20" throw pillows (lip stitch) in Holden Sand with optional\* Fringe Nubby Wool. Finish: Shaded Slate. **P543C-SH Montreux Bunching Cocktail Corner (2).** Finish: Shaded Slate. **V840-CH Sophie Chair.** Fabric: Soho Linen; one standard 12"x22" kidney pillow. Finish: Shaded Slate. \*Optional charges may apply.





◆ **CC20D Solene Lifestyle Cabinet.** Base: Plinth Base (D). Face: Greek Key (F08). Hardware: Premium Donnatello Stone Pull (H28) (*additional charge*)/Placement: One Column Centered on Each Drawer (P1). Finish: Marquis.