



VANGUARD

FURNITURE

ASSEMBLY INSTRUCTIONS FOR L101T-UF-P DINING TABLE

Thank you for purchasing this quality product. Please check all packing materials to ensure proper assembly. Please read all instructions carefully before starting the assembly process. Some parts are large and heavy and require at least two people to assemble, in order to prevent possible injury and/or damage to the piece.

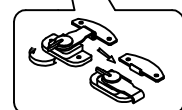
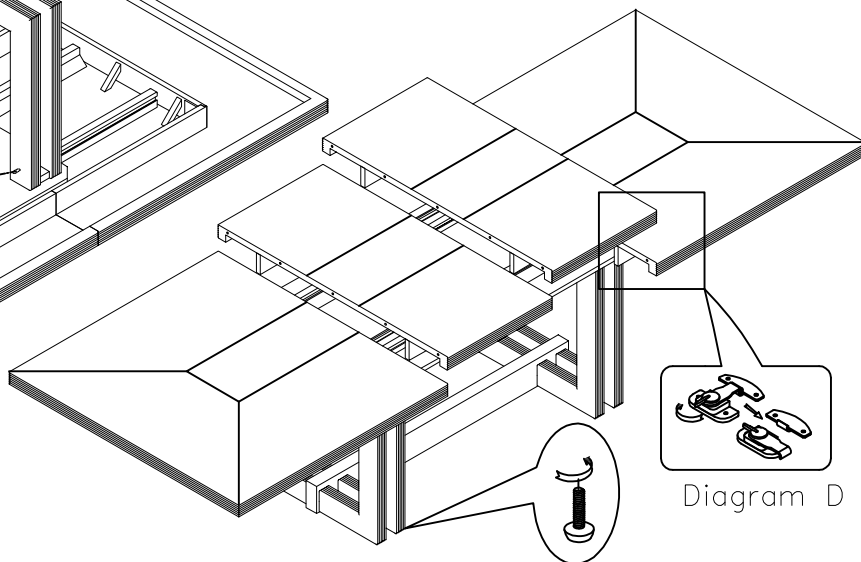
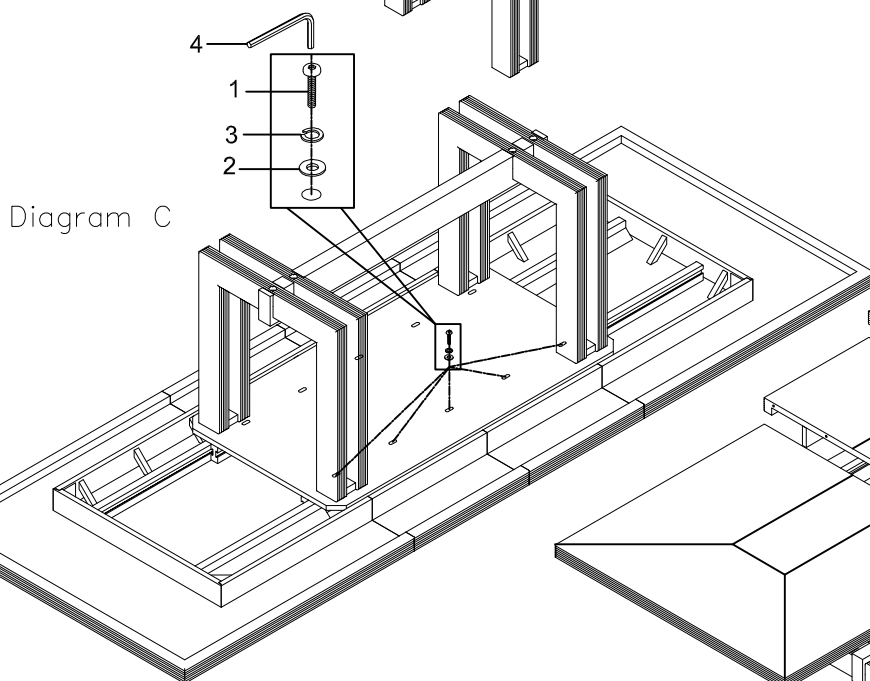
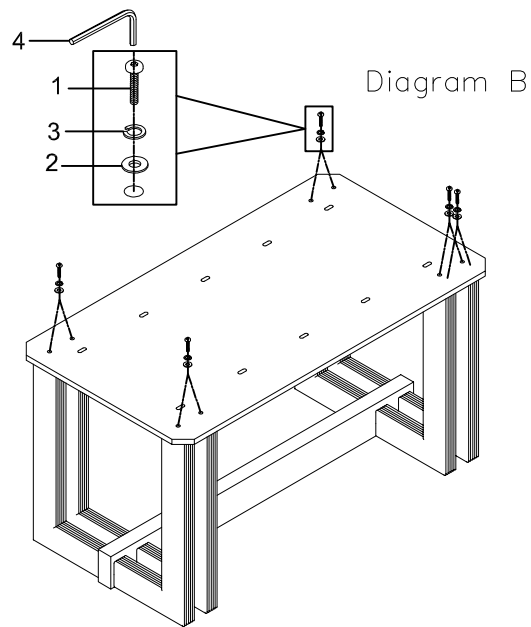
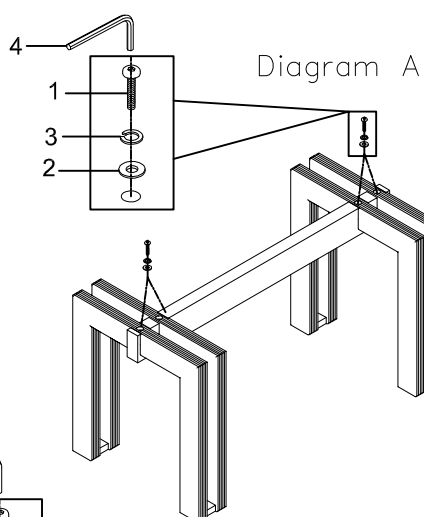
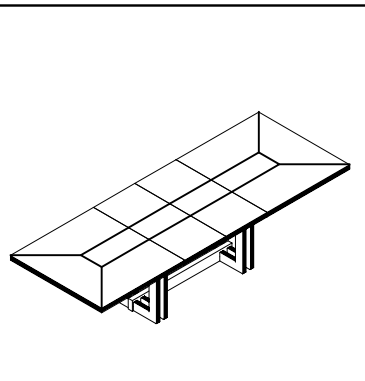


Diagram E

ASSEMBLY INSTRUCTION: (TWO PEOPLE REQUIRED)

1. Place the legs upside down on a clean and padded surface. Then place leg on the bottom rail, use bolt (1), lock washer (3), flat washer (2), and allen wrench (4) to attach legs. Diagram A
2. Turn the assembly base upright. Then use bolt (1), lock washer (3), flat washer (2), and allen wrench (4) to attach the bridge to the base. Diagram B
3. Next, place table top upside down on a clean padded surface, then use bolt (1), lock washer (3), flat washer (2), and allen wrench (4) to attach the assembled base with bridge to the table top. Tighten all bolts. Do not over tighten. Diagram C
4. Turn the table upright. TWO PEOPLE REQUIRED. To add table leaf, unlock underneath top and pull ends open. Carefully place leaf and close. Diagram D
5. Level the table using screw-in levelers in the base. Diagram E

HARDWARE PACK

NO.	DRAWING	DESCRIPTION	SIZE	Q'ty
1		Bolt	Ø5/16*2"	22pcs
2		Flat washer	Ø5/16"*19D*1.5	22pcs
3		Lock washer	Ø5/16"	22pcs
4		Allen Wrench	5MM	1pc

CLEANING INSTRUCTIONS:

Clean surfaces with a clean soft damp cloth.